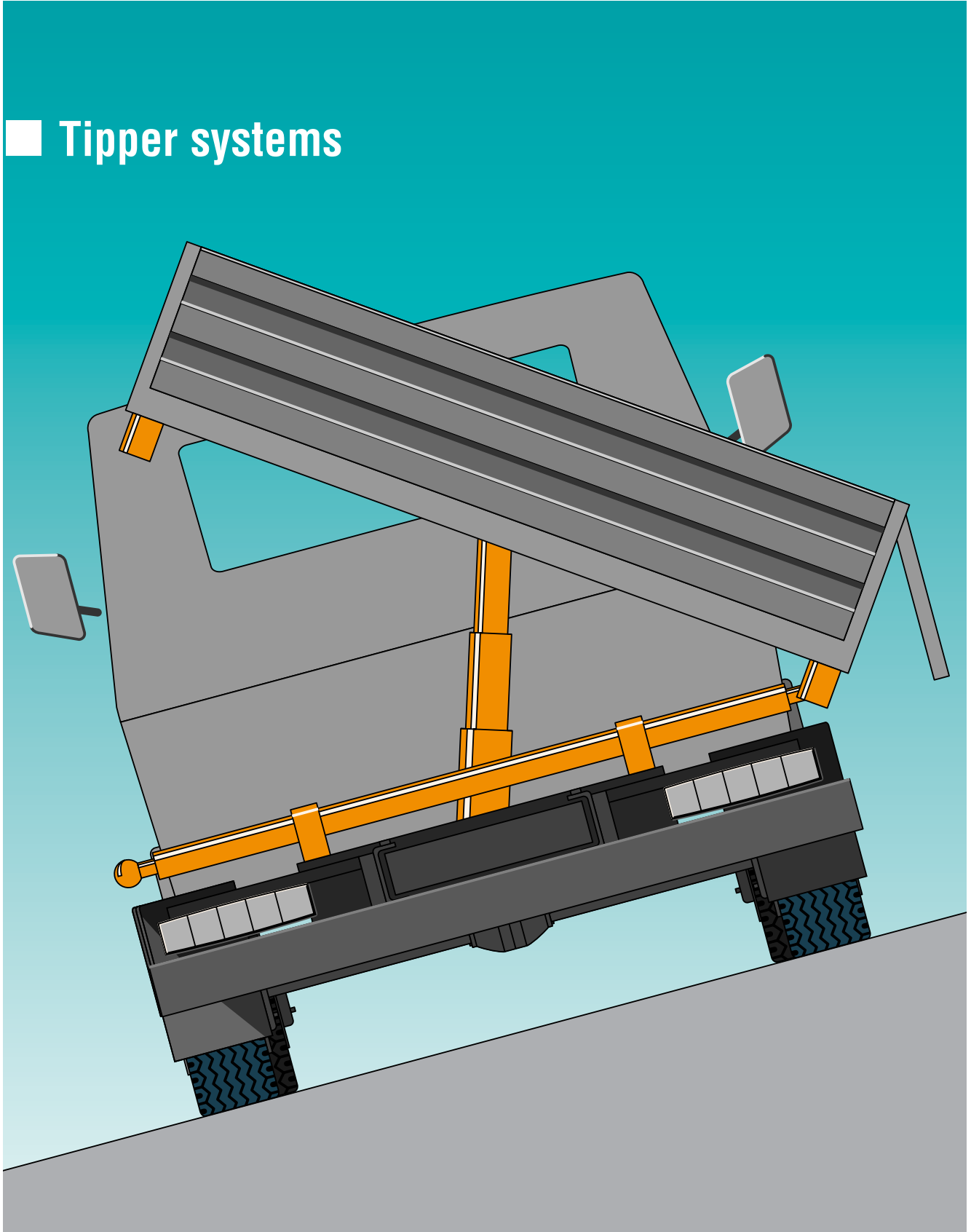


TITGEMEYER^{GTO}

YOUR SOLUTION

■ Tipper systems



All rights reserved.

The technical data quoted in this catalogue, performance descriptions, recommendations and instructions e.g. for the installation of the components available from us, are without liability. These are based on our experience.

Claims against us as a consequence are expressly excluded as much of the application of our goods remains outside our direct influence.

It is a fundamental obligation of the user to ascertain and to decide whether the goods provided by us are appropriate for a particular application.

This catalogue is our intellectual property! Disclosure to third parties is prohibited.

Reproduction – even in part – as well as use of our illustrations and TITGEMEYER part-numbering systems is only permitted with our express permission in writing.

Subject to change.

Supply of goods is in conformity with our delivery and payment conditions.

Gebr. TITGEMEYER GmbH & Co. KG
Osnabrück

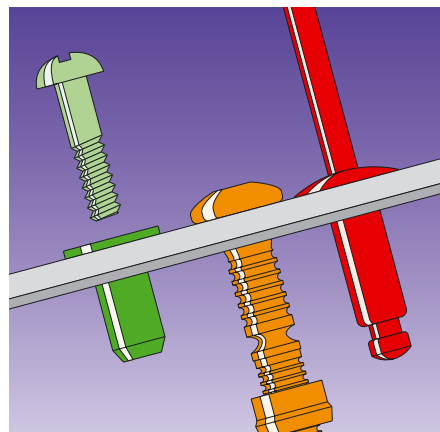
Over 100 years of tradition and expertise

At the turn of the century, an ironware wholesale business was established by the two Titgemeyer brothers, Adolf and Fritz, in their hometown of Melle. A few years later, offices were opened in the neighbouring town of Osnabrück. Since then, the business enterprise group TITGEMEYER has continuously developed and is today a leader in the fields of fastening technology and commercial vehicle equipment. The medium sized family organization is now led by the third generation - always with the aim of supplying the optimum solution for the customer - from single fixings, right up to complex vehicle systems.



Fastening Technology

The more varied the requirements, the more individual our solution is. The result: an extensive product range of fastening technology systems and solutions. New products are constantly being developed, as the manufacturing industry demands specially designed solutions. TITGEMEYER introduced the POP® blind rivet to the German market. Its application revolutionised traditional fastening technology.



The TITGEMEYER fastening technology product range

- Blind Rivets
- Threaded Inserts
- Assembly Systems
- Installation Tools
- Sealants and Adhesives

Vehicle components with style

The ideas and wishes of our customers are our benchmark. That is why we carefully develop approved products and systems for the manufacture of modern commercial vehicles. Safety, cost effectiveness and the environment – these requirements are all satisfied by our product range. The original and innovative body kit system, GETO Van®, is only one of many system solutions available from TITGEMEYER today.



The TITGEMEYER commercial vehicle product range

- Body Kits
- Chassis Technology
- Bodywork Components
- Bodywork Systems

Tipper systems	Hydraulic systems	Tipping trailer cylinders19.01.01.1
		Hand pumps19.01.01.2
	Air brake systems	Klaus tipping valve19.02.01.1
	Accessories	Tipper bridge bearings19.03.01.1
		Pivot ball bearings19.03.01.2
		Tipper arm bearings19.03.01.4
		Tipper supports19.03.01.5

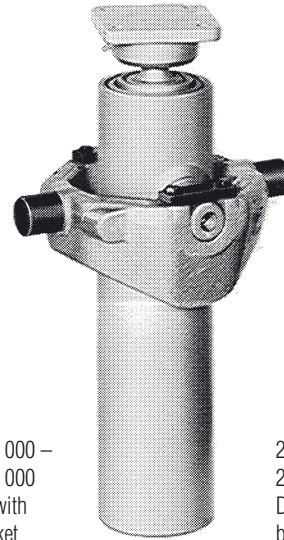
Content

114 003 000	19.02.01.1	207 582 000	19.03.01.5
		207 583 000	19.03.01.5
207 118 000	19.01.01.1		
207 128 000	19.01.01.1		
207 156 000	19.01.01.1		
207 160 000	19.01.01.1		
207 172 000	19.01.01.1		
207 173 000	19.01.01.1		
207 201 000	19.01.01.1		
207 202 000	19.01.01.1		
207 241 000	19.01.01.2		
207 243 000	19.01.01.2		
207 245 000	19.01.01.2		
207 450 000	19.03.01.3		
207 451 000	19.03.01.3		
207 452 000	19.03.01.3		
207 453 000	19.03.01.3		
207 454 000	19.03.01.3		
207 456 000	19.03.01.3		
207 457 000	19.03.01.3		
207 462 000	19.03.01.3		
207 463 000	19.03.01.3		
207 464 000	19.03.01.3		
207 465 000	19.03.01.3		
207 466 000	19.03.01.3		
207 467 000	19.03.01.3		
207 468 000	19.03.01.3		
207 469 000	19.03.01.3		
207 473 000	19.03.01.2		
207 473 000	19.03.01.3		
207 474 000	19.03.01.3		
207 475 000	19.03.01.3		
207 477 000	19.03.01.3		
207 478 000	19.03.01.3		
207 479 000	19.03.01.3		
207 479 000	19.03.01.4		
207 480 000	19.03.01.2		
207 480 000	19.03.01.3		
207 481 000	19.03.01.3		
207 485 000	19.03.01.2		
207 485 000	19.03.01.3		
207 486 000	19.03.01.3		
207 487 000	19.03.01.3		
207 491 000	19.03.01.3		
207 493 000	19.03.01.2		
207 493 000	19.03.01.3		
207 494 000	19.03.01.2		
207 495 000	19.03.01.2		
207 497 000	19.03.01.4		
207 498 000	19.03.01.4		
207 566 000	19.03.01.1		
207 567 000	19.03.01.1		
207 568 000	19.03.01.1		
207 570 000	19.03.01.5		
207 571 000	19.03.01.5		
207 572 000	19.03.01.5		
207 574 000	19.03.01.5		
207 580 000	19.03.01.5		

Hydraulic tipping trailer cylinders with ring-type gimbal support

For double and triple sided (rear tipping) hydraulic tipper systems operated manually only or manually and by motor. Single-acting, telescopic hydraulic cylinders, hard chrome-plated bars, pressurised oil feed through pin.

Nominal pressure p_N : 200 bar
Piston speed range: up to 0.1 m/s
Temperature range: between -10 °C and +80 °C
Hydraulic fluid medium: mineral oil
Viscosity range: between 10 mm²/s (cSt) and 300 mm²/s (cSt)



207 156 000 –
207 202 000
Design with
ball socket
for 3 sides



207 118 000 –
207 128 000
Design with
bolt hole
for 2 sides

Max. load [t]	Stroke [mm]	Overall length (+/- 5 mm) [mm]	Cylinder- \varnothing [mm]	Piston diam. / level				Stroke volume [Liter]	Weight approx. [kg/each]	Article No.
				1. [mm]	2. [mm]	3. [mm]	4. [mm]			
2-level design with bolt hole, for 2 sides										
4	500	372	80	59.5	44.4	–	–	1.7	13.80	207 118 000
5	500	400	95	78.0	59.5	–	–	2.2	19.95	207 128 000
3-level design with ball socket, for 3 sides										
6	1000	503	95	78.0	59.5	44.5	–	3.6	23.53	207 156 000
8	1000	514	110	69.5	69.5	54.5	–	5.4	37.22	207 160 000
8	1200	578	125	104.0	87.0	69.5	–	10.4	39.50	207 172 000
8	1400	641	125	104.0	87.0	69.5	–	11.9	43.10	207 173 000
4-level design with ball socket, for 3 sides										
6	1000	421	95	97.0	78.0	59.5	44.5	3.0	19.27	207 201 000
6	1350	506	95	87.0	69.5	54.5	39.5	4.0	22.92	207 202 000

19.01.01.2
 Tipper systems
 Hydraulic systems
Hand pumps

**Hand pumps for hydraulic tipper systems
 with pressure limiting profile, with oil tank**

3 switching positions:

1. Lift – with both oil circuits interconnected (control lever points to the right)
2. Lift – with both oil circuits separated, so-called tandem position.
 Here, two equal cylinders can be extended at the same time regardless of the load (control level points downwards)
3. Lower (control lever points to the left)

Nominal pressure p_N : 180 bar

Test pressure: 250 bar

Feed rate/amount of play on pump (η 0.95) \div 2 x 9.5 = 19 cm³

Req. pump torque at p_N (η 0.9): 200 Nm



207 241 000 – 207 245 000

Spacing between mounting holes 230 x 180 mm, hole diam. 11.5 mm

Contents [l]	Oil tank		Tank depth		Weight approx. [kg/each]	Article No.
	Usable oil quantity [l]	Without drive shaft	With drive shaft			
5	4.5	151	226	7.0	207 241 000	
7	6.5	211	286	7.5	207 243 000	
9	8.5	274	349	8.0	207 245 000	

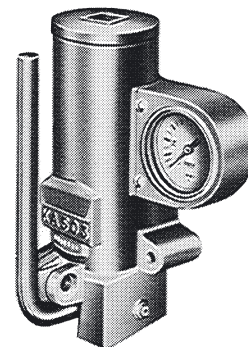
The technical specifications contained in this brochure are approximate and no guarantee is given as to their accuracy. Designs are subject to change.

Klaus tilt valve with pressure gauge, type KA 503

With 3 settings: lift, hold, lower

Weight: approx. 3.6 kg/each

Article No. 114 003 000



114 003 000

19.02.01.2

Tipper systems

Air brake systems

Klaus tilt valve

Tipper bridge bearings

“POLYP” tipper bridge bearings

Elastic tipper bridge bearing for double and triple sided tipper trailers, tipper trucks and all types of rear tippers. Installing the “POLYP” safety gear gives the tipping body an elastic support. The “POLYP” safety gear can also be used to hold the mechanism down and prevents the tipping body from bouncing up and down especially during empty tours on bad or uneven roads. Depending on the size of the vehicle, between 2 and 4 “POLYP” tipper bridge bearings will be needed.

Material: Rubber impact shield
All other parts made of untreated steel

Weight: 207 566 000 – approx. 1.0 kg/each
207 567 000 – approx. 1.1 kg/each
207 568 000 – approx. 0.8 kg/each

**Article No. 207 566 000 – Elastic impact shield
with hollow screw**

**207 567 000 – Cone-shaped bearing shell
with tapered pin**

207 568 000 – Lower bearing shell



207 567 000



207 566 000
207 568 000

19.03.01.2

Tipper systems

Accessories

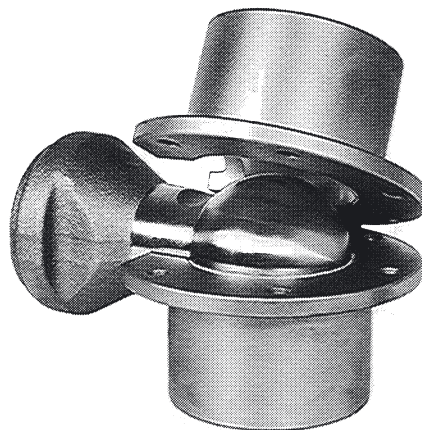
Pivot ball bearings

Pivot ball bearings

For rear-tipping tipper trucks
rear-tipping tipper trailers
rear-tipping semi-trailers

up to a maximum weight of 36 t

Includes sturdy, drop-forged ball as well as upper/lower pivot bearing sections with bolted-in Durethane shell – the ideal pivot bearing for all types of reverse tipper. Thanks to the bolted-in Durethane shell, the pivot ball bearing runs wear-free throughout its long service life. The tight-fitting screw fastener on the pivot ball bearing prevents all forms of dirt particles getting through.



Description	Weight approx. [kg/each]	Article No.
Type 5000, 80 mm bearing for max. weight of 24 t		
Welded-on ball \varnothing 80 mm, round pin \varnothing 106 mm	5.98	207 473 000
Pivot ball bearing 80 mm, complete	6.07	207 494 000
Supplied loose for use as spare parts:		
Replaceable plastic insert (Durethane) for 80 mm bearing	0.10	207 480 000
Type 6000, 100 mm bearing for max. weight of 36 t		
Welded-on ball \varnothing 100 mm, round pin \varnothing 120 mm	9.8	207 485 000
Pivot ball bearing 100 mm, complete	10.2	207 495 000
Supplied loose for use as spare parts:		
Replaceable plastic insert (Durethane) for 100 mm bearing	0.2	207 493 000

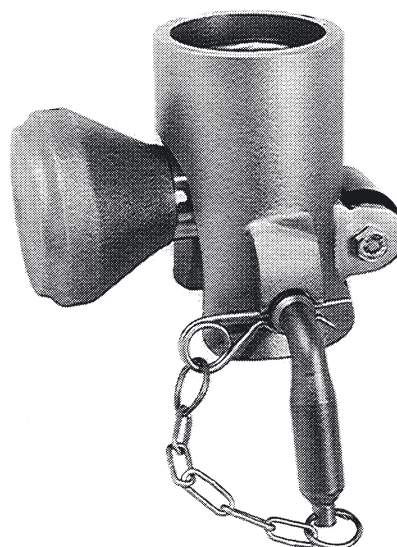
Pivot ball bearings

For agricultural tippers
tipper trucks
tipper trailers
tipper semi-trailers

up to a maximum weight of 36 t

Outstanding benefits

- Built-in noise damping
- Easy installation
- Logical, maintenance-free design
- Drop-forged component
- Robust, cost-effective design based on high-quality materials
- Wear-resistant bearing materials
- Weight advantages incorporated into the design
- Max. tipping angle of up to 50°



For a detailed overview and article numbers, please see next page.

The technical specifications contained in this brochure are approximate and no guarantee is given as to their accuracy. Designs are subject to change.

Bezeichnung	Weight approx. [kg/each]	Article No.	
		left	right
Type 1000, ball ø 45 mm, up to 8 t total weight for agricultural vehicles and lightweight tipper mechanisms			
Welded-on ball ø 45 mm, round pin ø 45 mm	0.96	207 450 000	
Pivot bearing with replaceable plastic insert	0.64	207 451 000	207 452 000
Locking pin with chain and cotter pin, ø 16 mm, smooth	0.31	207 453 000	
Supplied loose for use as spare parts:			
Replaceable plastic insert (Durethane) for 45 mm bearing	–	207 454 000	
Type 2000, ball ø 60 mm, up to 12 t total weight for tipper trucks and tipper trailers			
Welded-on ball ø 60 mm, round pin ø 65 mm	2.19	207 456 000	
Welded-on ball ø 60 mm, rectangular pin ø 81 mm	2.19	207 457 000	
Pivot ball bearing ø 60 mm, with replaceable plastic insert, with noise damping, hole 19/19 mm	1.79	207 462 000	207 463 000
Pivot ball bearing ø 60 mm, with replaceable plastic insert, with noise damping, hole 20/18 mm	1.82	207 464 000	207 465 000
Locking pin with chain and cotter pin, shaft ø 19 mm, smooth	0.50	207 466 000	
Locking pin with chain and cotter pin, shaft ø 20/18 mm, offset	0.52	207 467 000	
Supplied loose for use as spare parts			
Replaceable plastic insert (Durethane) for 60 mm bearing	0.10	207 468 000	
Noise-damping roller (Vulkollan), 50 x 20 x 18 mm	0.10	207 469 000	
Type 3000, ball ø 80 mm, up to 24 t total weight for tipper trucks, tipper trailers and tipper semi-trailers			
Welded-on ball ø 80 mm, pin ø 106 mm	5.98	207 473 000	
Pivot ball bearing ø 80 mm, with replaceable plastic insert, with noise damping, hole 24/24 mm	3.88	207 474 000	207 475 000
Pivot ball bearing ø 80 mm, with replaceable plastic insert, with noise damping, hole 25/22 mm	3.85	207 477 000	
Locking pin with chain and cotter pin, shaft ø 24 mm, smooth	0.87	207 478 000	
Locking pin with chain and cotter pin, shaft ø 25/22 mm, offset	0.88	207 479 000	
Supplied loose for use as spare parts			
Replaceable plastic insert (Durethane) for 80 mm bearing	0.10	207 480 000	
Noise-damping roller (Vulkollan), 50 x 42 x 18 mm	0.10	207 481 000	
Type 4000, ball ø 100 mm, up to 36 t total weight for tipper trucks, tipper trailers and tipper semi-trailers			
Welded-on ball ø 100 mm, pin ø 120 mm	9.80	207 485 000	
Pivot ball bearing ø 100 mm, with replaceable plastic insert, with noise damping, hole 30/30 mm	6.72	207 486 000	207 487 000
Locking pin with chain and cotter pin, shaft ø 30 mm, smooth	1.40	207 491 000	
Supplied loose for use as spare parts			
Replaceable plastic insert (Durethane) for 100 mm bearing	0.20	207 493 000	
Noise-damping roller (Vulkollan), 50 x 42 x 18 mm	0.10	207 481 000	

19.03.01.4

Tipper systems

Accessories

Tipper arm bearings

Tipper arm bearing type 8000

With noise damping and lateral length compensation for use on tipper bodies with a gross vehicle weight of up to 28 t that only tip backwards or to one side. Can be combined with pivot ball bearing \varnothing 80 mm, Article No. 207 474 / 475, in left-/right-hand configuration.

Also available to order with gross vehicle weight of up to 40 t.

Material: Forged steel

Weight: 207 479 000 – approx. 0.88 kg/each

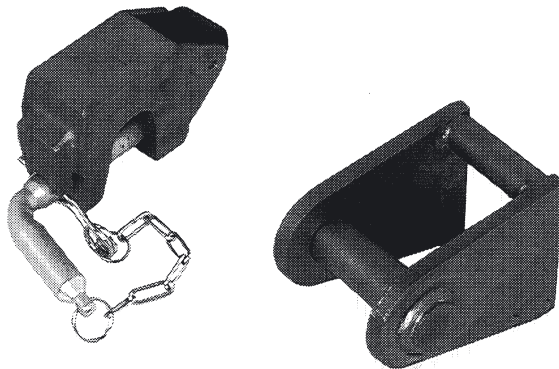
207 498 000 – approx. 3.55 kg/each

207 497 000 – approx. 3.85 kg/each

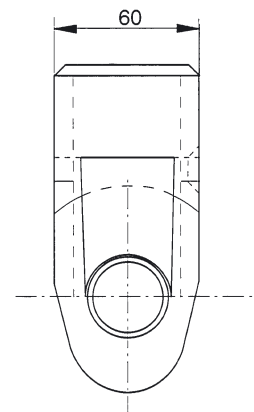
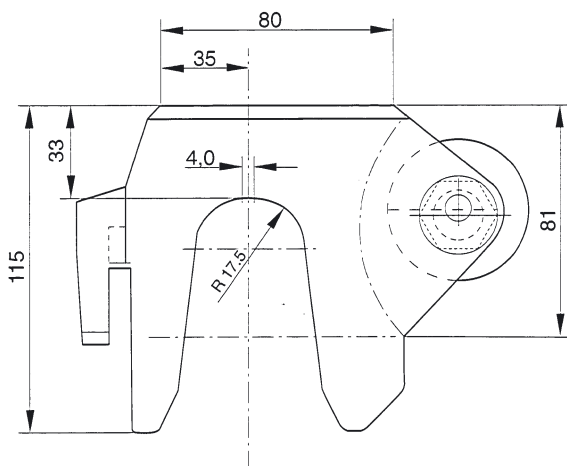
Article No. 207 479 000 – Locking pin, shaft \varnothing 25/22 mm, offset

207 498 000 – Tipper arm bearing, hole 24/24 mm

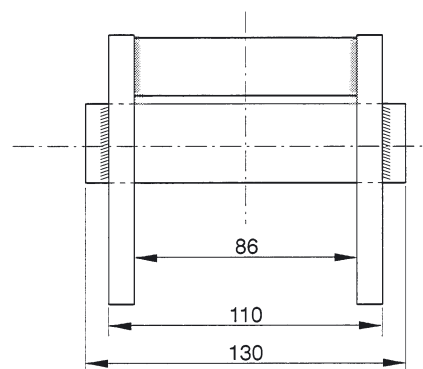
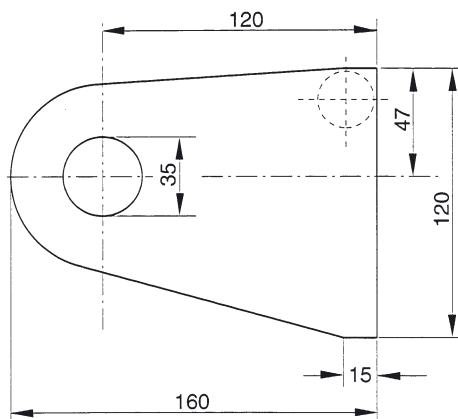
207 497 000 – Tipper arm yoke



207 498 000

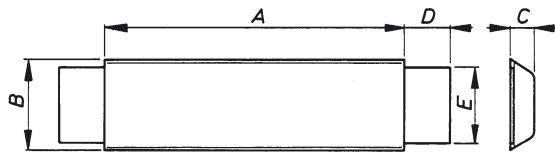


207 497 000



The technical specifications contained in this brochure are approximate and no guarantee is given as to their accuracy. Designs are subject to change.

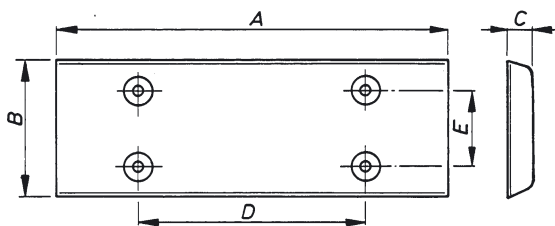
Weld-on plastic rail for tippers



207 580 000

A	B	C	D	E	Weight approx. [kg/each]	Article No.
[mm]	[mm]	[mm]	[mm]	[mm]		
200	65	13	35	45	0.361	207 580 000

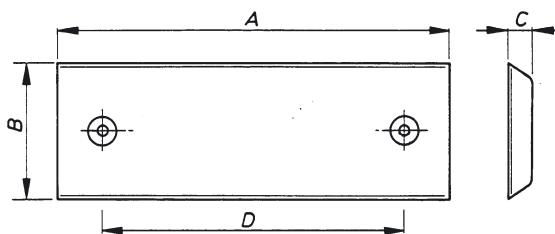
Bolt-on, metal-reinforced tipper supports



207 570 000 – 207 574 000

A	B	C	D	E	Hole		Weight approx. [kg/each]	Article No.
					Quantity	∅		
[mm]	[mm]	[mm]	[mm]	[mm]	[mm]	[mm]		
260	70	20	150	35	4	7	0.607	207 570 000
260	90	10	150	50	4	8	0.534	207 571 000
260	90	20	150	50	4	9	0.800	207 572 000
600	90	25	500	50	4	9	2.038	207 574 000

Bolt-on, metal-reinforced tipper supports



207 570 000 – 207 574 000

A	B	C	D	Hole		Weight approx. [kg/each]	Article No.
				Quantity	∅		
[mm]	[mm]	[mm]	[mm]	[mm]	[mm]		
50	50	14	–	1	7	0.045	207 582 000
140	50	17	95	2	7	0.207	207 583 000

The technical specifications contained in this brochure are approximate and no guarantee is given as to their accuracy. Designs are subject to change.

19.03.01.6
Tipper systems
Accessories
Tipper support



■ **Gebr. TITGEMEYER GmbH & Co. KG**

■ Hannoversche Straße 97
■ (Navigation: Hettlicher Masch 2)
■ 49084 Osnabrück, Germany
P.O. Box 43 20
49033 Osnabrück, Germany
Phone: +49 (0)5 41/58 22-0
Fax: +49 (0)5 41/58 22-9910
email: export@titgemeyer.com
www.titgemeyer.com